



Trimble X7

3D LASER SCANNING SYSTEM

High-speed 3D laser scanning system with new innovations to simplify adoption, increase efficiency and provide confidence in the field.

Simple

- ▶ Reliable field workflows suitable for all users
- ▶ Intuitive Trimble Perspective software to operate, manage, view and validate scan data
- ▶ Fast image capture with Trimble® VISION™ technology
- ▶ Compact and lightweight for easy transport and mobility

Smart

- ▶ Breakthrough innovations for reliable data collection
- ▶ New Trimble X-Drive deflection system enables automatic calibration to ensure accuracy on every scan with no downtime for calibration service
- ▶ Unique Trimble Registration Assist for automatic registration, refinement, and reports to leave the site with confidence
- ▶ Automated survey grade self-leveling

Professional

- ▶ Reliable IP55 rating and industry leading 2-year standard warranty
- ▶ High sensitivity time-of-flight EDM to effectively capture dark and reflective surfaces
- ▶ Flexible operation with tablet or one-button workflow
- ▶ Data integration with Trimble and non Trimble software

Learn more: geospatial.trimble.com/X7



| SYSTEM OVERVIEW | | | | | | |
|----------------------------------|--|------------------------|------------------------|------------------------|----------------------------|-----------------------|
| Trimble X7 | High-speed 3D laser scanner with combined servo drive/scanning mirror, integrated imaging, automatic calibration, automated registration technologies and survey-grade self-leveling | | | | | |
| Trimble Perspective | Easy to use software for scanner control, 3D data visualization and processing. Capabilities include automated infield registration, annotations and measurements | | | | | |
| SCANNING PERFORMANCE | | | | | | |
| GENERAL | | | | | | |
| Scanning EDM Laser Class | Laser class 1, eye safe in accordance with IEC EN60825-1 | | | | | |
| Laser Wavelength | 1550nm, invisible | | | | | |
| Field of View | 360° x 282° | | | | | |
| Scan Duration | Fastest 2 min 34 sec with images, 1 min 34 sec without | | | | | |
| Scan Speed | Up to 500kHz | | | | | |
| RANGE MEASUREMENT | | | | | | |
| Range Principle | High speed, digital time-of-flight distance measurement | | | | | |
| Range Noise ¹ | <3 mm @ 60 m on 80% albedo ² | | | | | |
| Range ³ | 0.6 m - 80 m | | | | | |
| High Sensitivity Mode | Dark (asphalt) and reflective (stainless steel) surfaces | | | | | |
| SCANNING ACCURACY | | | | | | |
| Validation | Guaranteed over lifetime with auto-calibration | | | | | |
| Range Accuracy ¹ | 2 mm | | | | | |
| Angular Accuracy ^{1,5} | 21" | | | | | |
| 3D Point Accuracy ^{1,5} | 2.4 mm @ 10 m, 3.5 mm @ 20 m, 6.0 mm @ 40 m | | | | | |
| SCANNING PARAMETERS | | | | | | |
| DURATION ⁴ (MIN) | SCAN MODE | SPACING (MM) @ 10 M | SPACING (MM) @ 35 M | SPACING (MM) @ 50 M | NUMBER OF POINTS (MPTS) | MAX FILE SIZE (MB) |
| 2 | Standard | 11 | 40 | 57 | 12 | 160 |
| 4 | Standard | 5 | 18 | 26 | 58 | 420 |
| | High Sensitivity | 9 | 33 | 47 | 17 | 190 |
| 7 | Standard | 4 | 12 | 18 | 125 | 760 |
| | High Sensitivity | 6 | 21 | 30 | 42 | 330 |
| 15 | High Sensitivity | 4 | 13 | 19 | 109 | 710 |
| IMAGING PERFORMANCE | | | | | | |
| Sensors | 3 coaxial, calibrated 10MP cameras | | | | | |
| Resolution | 3840 x 2746 pixels for each image | | | | | |
| Raw Image Capture | Fast 1 minute - 15 images - 158MP Quality 2 minutes - 30 images - 316MP | | | | | |
| Settings | Auto Exposure Auto White Balance correction and indoor/outdoor presets | | | | | |
| AUTOMATIC LEVEL COMPENSATION | | | | | | |
| Type | Automatic Self-leveling, Selectable on/off | | | | | |
| Range | ± 5° (Survey Grade), ± 45° (Coarse) | | | | | |
| Upside Down | ± 5° (Survey Grade) | | | | | |
| Survey Grade Accuracy | < 3" = 0.3 mm @ 20 m | | | | | |

Trimble X7 3D LASER SCANNING SYSTEM

| AUTOMATIC CALIBRATION | |
|--------------------------------|---|
| Integrated Calibration System | Full auto-calibration of range and angular systems in 25 seconds with no user interaction or targets |
| Angular Calibration | Applies a correction to the collimation error, i.e., the deviation of the horizontal, vertical or sight axis |
| Range Calibration | Applies a distance correction in the albedo and the distance measurement |
| Smart Calibration | Monitors environmental temperature, ambient light, vibration, instrument temperature and vertical speed for optimum performance |
| TRIMBLE REGISTRATION ASSIST | |
| Inertial Navigation System | IMU tracks instrument position, orientation and movement |
| Auto-Registration | Automatic scan orientation and alignment with last or pre-selected scan |
| Manual Registration | Manual alignment or split screen cloud to cloud |
| Visual Checks | Dynamic 2D and 3D viewing for QA |
| Refinement | Automatic registration refinement |
| Registration Report | Report with project and station average error, overlap and consistency results |
| GENERAL SPECIFICATIONS | |
| WEIGHT AND DIMENSIONS | |
| Instrument (including battery) | 5.8 kg (12.78 lbs) |
| Internal Battery | 0.35 kg |
| Dimensions | 178 mm (W) x 353 mm (H) x 170 mm (D) |
| POWER SUPPLY | |
| Battery Type | Rechargeable Li-Ion battery 11.1V, 6.5Ah (Standard for Trimble Optical Instruments) |
| Typical Duration | 4 hours per battery |
| ENVIRONMENTAL | |
| Operating Temperature | -20 °C to 50 °C (-4 °F to 122 °F) |
| Storage Temperature | -40 °C to 70 °C (-40 °F to 158 °F) |
| Ingress Protection Rating | IP55 (dust protected and water jet) |
| OTHERS | |
| Remote Control | Trimble T10 tablet or comparable Windows® 10 tablet or laptop via WLAN or USB cable |
| Push Button | One-button scan operation |
| Communications / Data Transfer | WLAN 802.11 A/B/G/N/AC or USB Cable |
| Data Storage | Standard SD Card (32GB SDHC included) |
| Accessories | <ul style="list-style-type: none"> • Backpack for easy transport and airline carry-on • Lightweight carbon fiber tripod with bell connector • Quick release adapter for X7 and carbon fiber tripod |
| Warranty | 2 year standard |

Trimble X7 3D LASER SCANNING SYSTEM

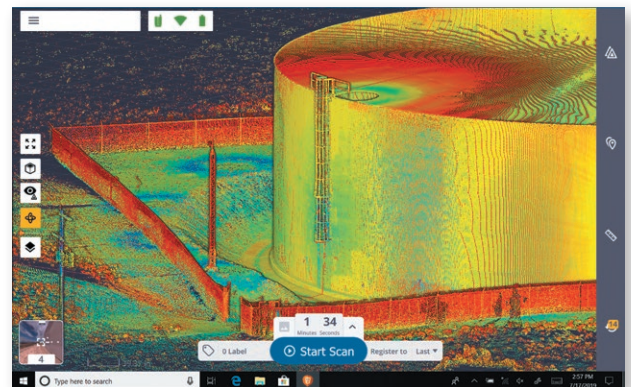
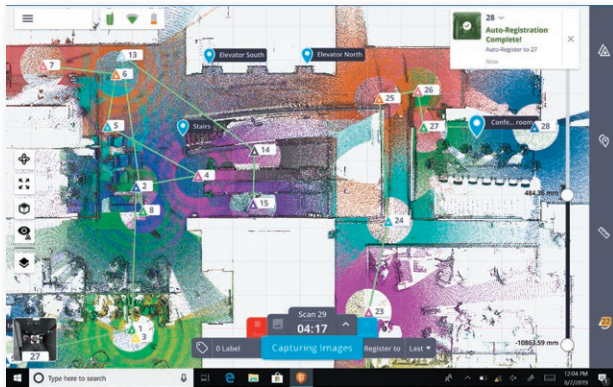
TRIMBLE PERSPECTIVE SOFTWARE

SYSTEM REQUIREMENTS

| | |
|------------------|--|
| Operating System | Microsoft® Windows® 10 |
| Processor | Intel® 6th Generation Core™ i7 2.5 GHz processor or better |
| RAM | 8GB or better |
| VGA Card | Intel HD Graphics 520 or better |
| | 256 GB Solid State Drive (SSD), (512GB or more for best performance) |

FEATURES

| | |
|-----------------------------|---|
| Scanner Operation | Remote control or cable |
| Trimble Registration Assist | Automatic and manual registration, refinement and reporting. |
| Data Interaction | 2D, 3D and Station View |
| In-field Documentation | Scan labels, annotations, pictures and measurements |
| Auto Sync | Automatic data sync from one-button operation |
| Data Redundancy | Data stored on SD Card and tablet |
| Data Integration | Export formats to support Trimble and non-Trimble software File formats: TDX, TZF, E57, PTX, RCP, LAS, POD |



- 1 Specification given as 1 sigma.
- 2 Albedo given @ 1550 nm.
- 3 On matte surface with normal angle of incidence.
- 4 Durations are rounded up to the nearest minute and include auto-calibration.
- 5 When instrument leveled within ± 5.

Specifications subject to change without notice.

Contact your local Trimble Authorized Distribution Partner for more information

NORTH AMERICA
Trimble Inc.
10368 Westmoor Dr
Westminster CO 80021
USA

EUROPE
Trimble Germany GmbH
Am Prime Parc 11
65479 Raunheim
GERMANY

ASIA-PACIFIC
Trimble Navigation
Singapore PTE Limited
3 HarbourFront Place
#13-02 HarbourFront Tower Two
Singapore 099254
SINGAPORE